

**OLDENBURG**inc.  
A RENAISSANCE COMPANY

185 Lorne Images

---

**OLDENBURG**inc.  
A RENAISSANCE COMPANY

---

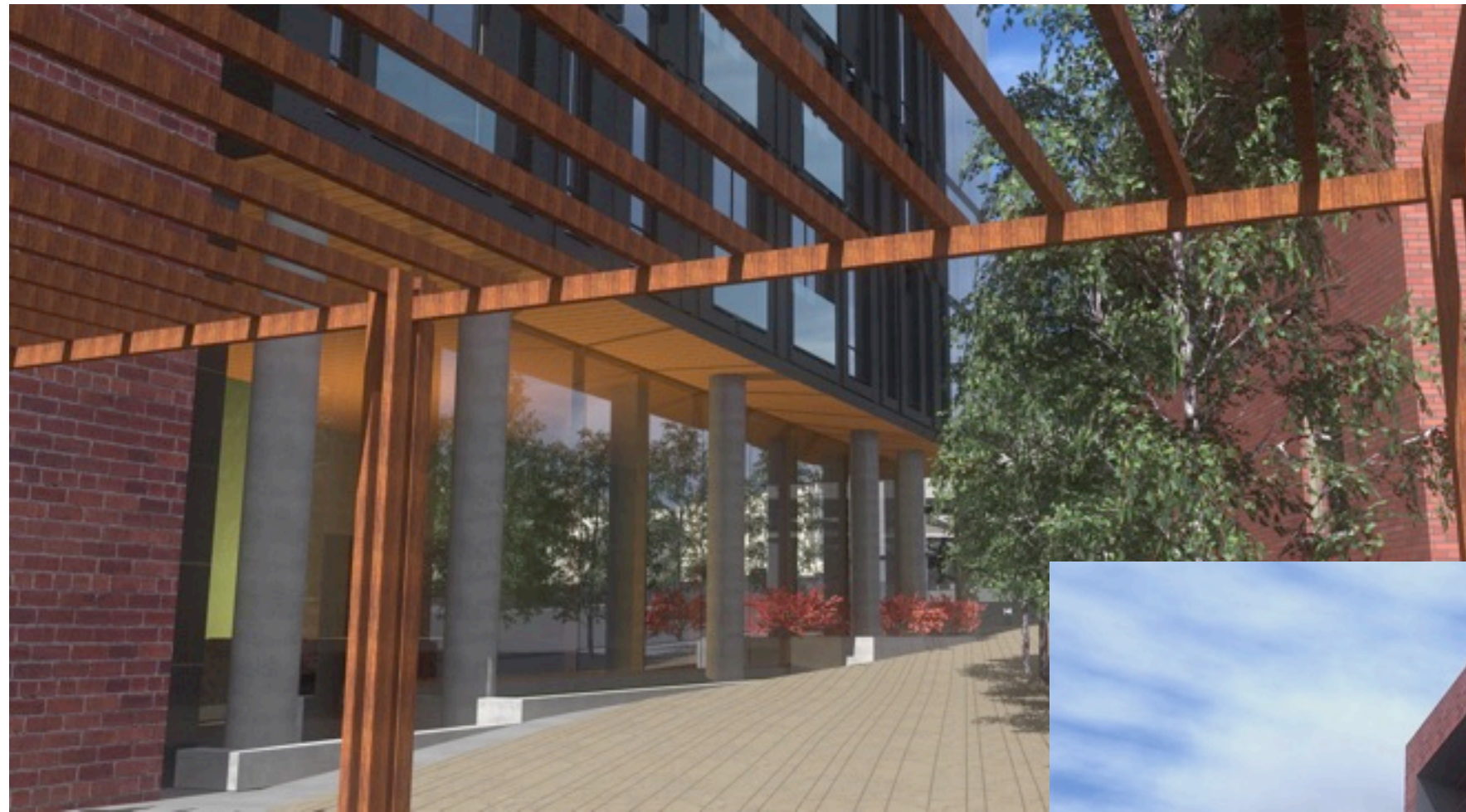
185 Lorne Images

DEVELOPMENT IMAGES





DEVELOPMENT IMAGES





DEVELOPMENT IMAGES





DEVELOPMENT IMAGES



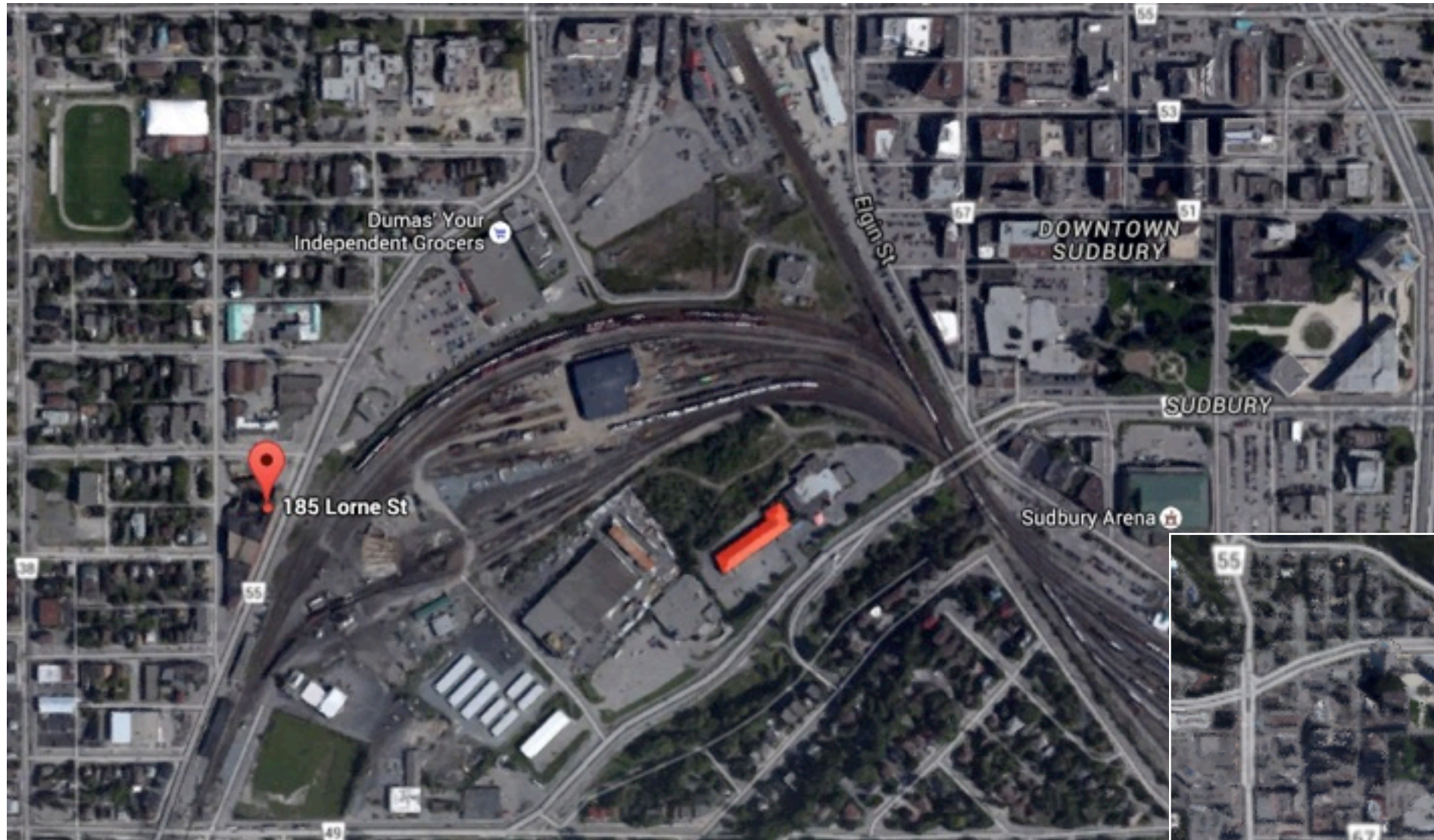


DEVELOPMENT IMAGES





LOCATION





ACCESS



# WHAT'S NEARBY

In the ever-changing downtown community - the one constant is the easy access to everyday products, services, facilities and businesses within a short walk or drive. Whether it be a grocery or hardware store, restaurant or bar, tennis club or skating - The Brewer Lofts is close to everything.

### DAILY CONVENIENCES & AMENITIES

- |                           |                       |
|---------------------------|-----------------------|
| 1. Dumas                  | 9. BMO                |
| 2. Sudbury Steam Cleaners | 10. CIBC              |
| 3. Shoppers Drug Mart     | 11. Petro-Canada      |
| 4. I.D.A. Pharmacy        | 12. Skin MediSpa      |
| 5. Uptown Cleaners        | 13. Esquire Tailors   |
| 6. RBC                    | 14. Canada Post       |
| 7. TD Bank                | 15. Eat Local Sudbury |
| 8. Scotiabank             |                       |

### DINE & DRINK

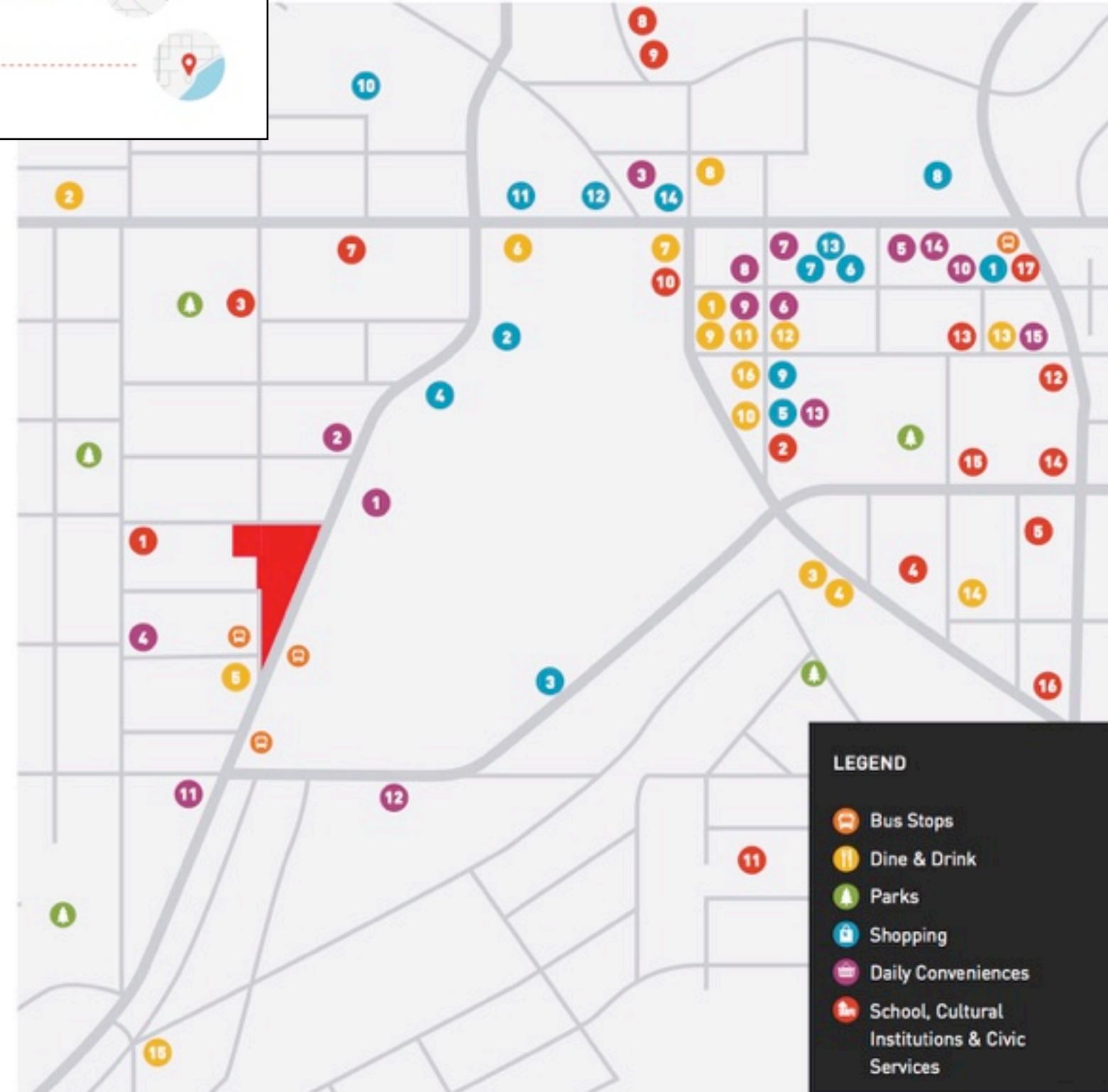
- |                                  |                              |
|----------------------------------|------------------------------|
| 1. Fromagerie Elgin              | 9. 84 Station                |
| 2. Gus's Restaurant              | 10. Cafe Petit Gateau        |
| 3. Laughing Buddha               | 11. SRO Nightclub            |
| 4. Townhouse Tavern              | 12. Oscars Restaurant        |
| 5. Pizza One                     | 13. Matley Kitchen           |
| 6. Hardrock Gastropub            | 14. Old Rock (two locations) |
| 7. La Casa Mexicana              | 15. Vespa Street Kitchen     |
| 8. The Grand Nightclub & Theatre | 16. Speakeasy                |

### SHOPPING

- |                                 |                                |
|---------------------------------|--------------------------------|
| 1. LCBO                         | 8. City Centre Mall            |
| 2. The Beer Store               | 9. Jan Browning Boutique       |
| 3. Kelly Lake Building Supplies | 10. Evans Home Building Centre |
| 4. Sherwin Williams Paint Store | 11. Bay Used Books             |
| 5. Reg Wilkinson Mens Wear      | 12. Comics North               |
| 6. Stitch & Stone               | 13. Querney's Office Supplies  |
| 7. Sixty Six                    | 14. Fiorino's at the Port      |

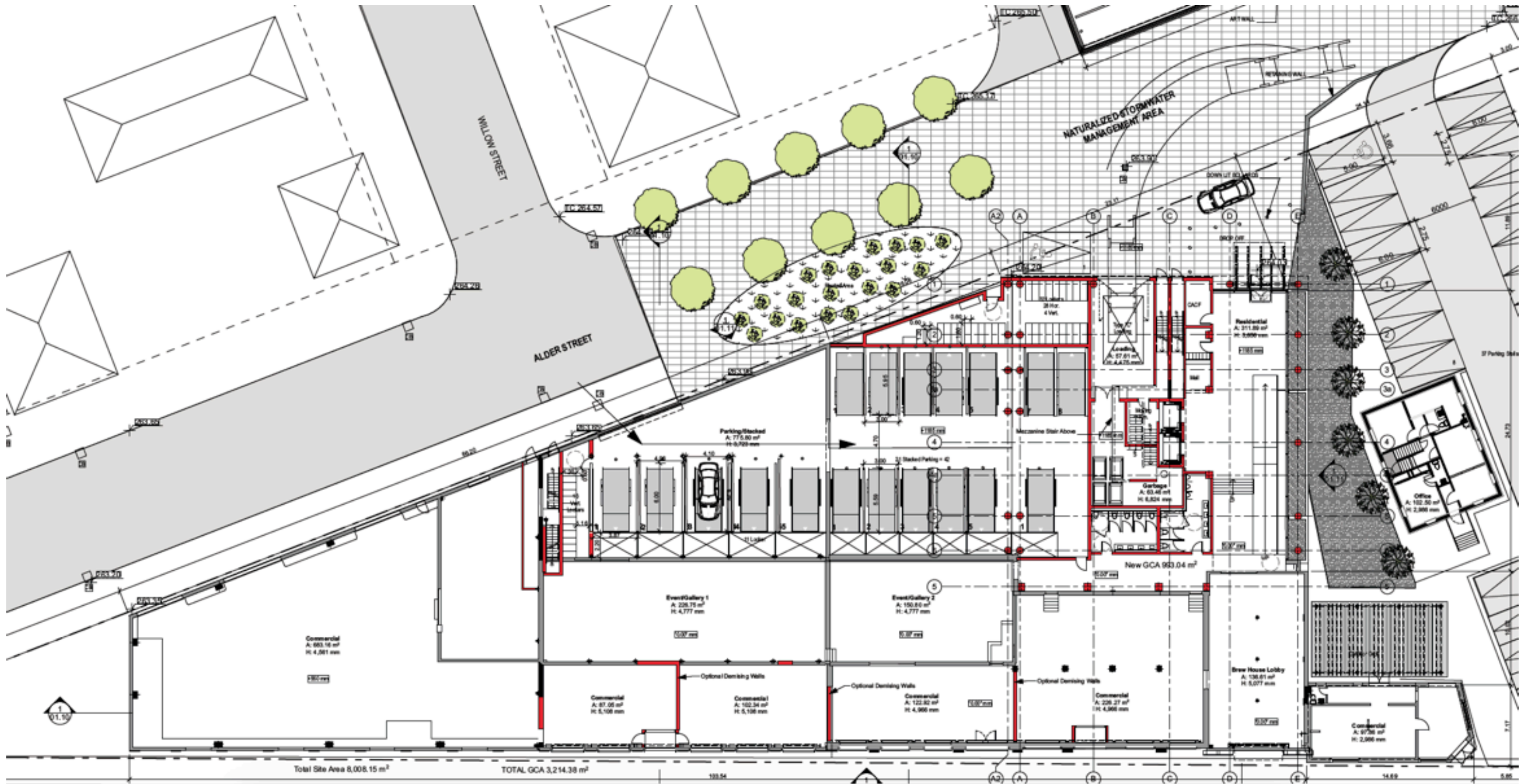
### SCHOOLS, CULTURAL INSTITUTIONS & CIVIC SERVICES

- |  |                                       |
|--|---------------------------------------|
| 1. Montessori School of Sudbury                          | 10. Laurentian School of Architecture |
| 2. YMCA  | 11. Alexander Public School           |
| 3. Queen's Athletic Field & Sudbury Indoor Tennis Centre | 12. Service Ontario                   |
| 4. Sudbury Community Arena                               | 13. Service Canada Centre             |
| 5. Sudbury Theatre Centre                                | 14. City Hall                         |
| 6. Sudbury Courthouse                                    | 15. Police Station                    |
| 7. Theatre Cambrian                                      | 16. Fire Station                      |
| 8. Sudbury Secondary School                              | 17. Transit Hub                       |
| 9. Sudbury Public Library                                |                                       |





FIRST FLOOR

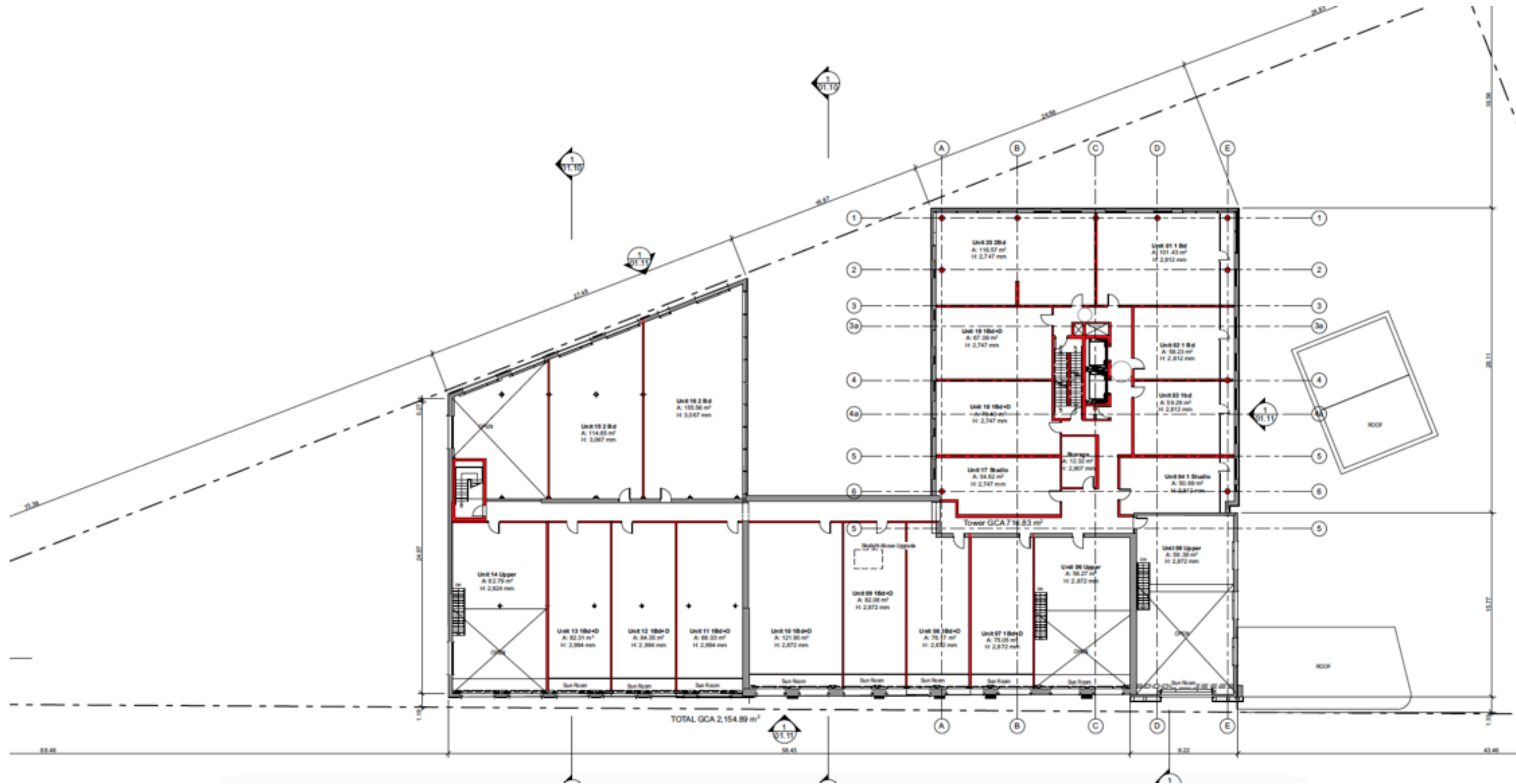








THIRD FLOOR





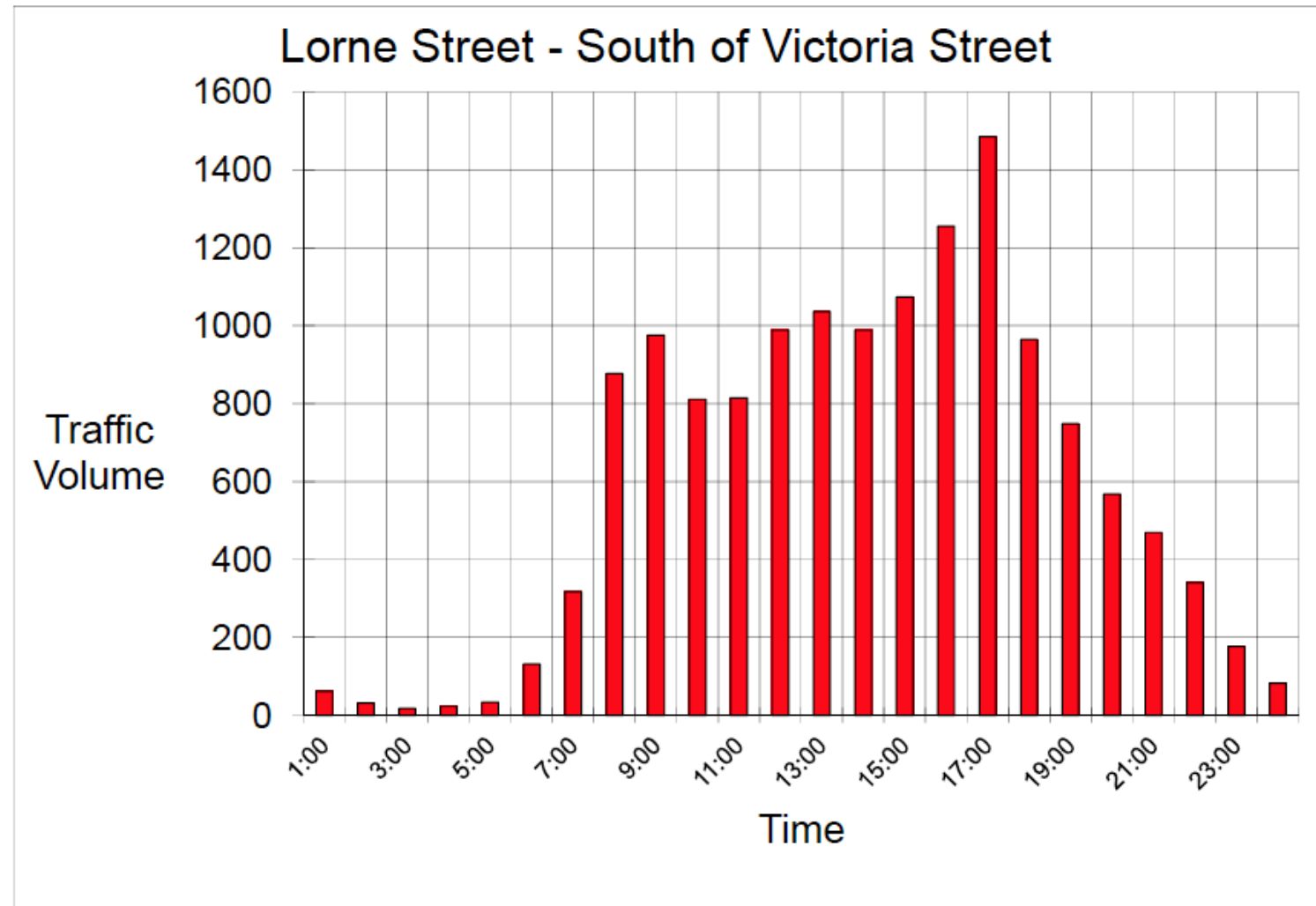
TRAFFIC COUNT - Lorne St Southbound to Douglas

**AUTOMATIC COUNTER TABULATIONS**

STREET: Lorne Street  
 LOCATION: South of Victoria Street  
 COUNTER NUMBER: ADR - 11  
 YEAR: 2012  
 MONTH: 5  
 DAY: 22  
 TOTAL: 15432  
 AADT: 14275  
 Analyst: LP

HOUR	FIRST QUARTER	SECOND QUARTER	THIRD QUARTER	FOUR QUARTER	TOTAL	TOTALS FACTORED
0 to 1	18	23	14	12	67	62
1 to 2	7	13	8	6	34	31
2 to 3	5	7	5	2	19	18
3 to 4	2	11	5	7	25	23
4 to 5	4	8	11	14	37	34
5 to 6	19	28	30	65	142	131
6 to 7	62	78	87	116	343	317
7 to 8	160	218	280	290	948	877
8 to 9	293	260	281	221	1055	976
9 to 10	239	202	247	189	877	811
10 to 11	214	231	218	218	881	815
11 to 12	233	269	279	288	1069	989
12 to 13	292	268	283	277	1120	1036
13 to 14	263	262	274	270	1069	989
14 to 15	277	290	257	336	1160	1073
15 to 16	343	314	353	347	1357	1255
16 to 17	392	402	379	433	1606	1486
17 to 18	311	263	238	231	1043	965
18 to 19	243	205	196	165	809	748
19 to 20	173	151	157	133	614	568
20 to 21	121	138	115	133	507	469
21 to 22	112	92	89	76	369	341
22 to 23	51	52	40	48	191	177
23 to 24	33	23	18	16	90	83
Total	3867	3808	3864	3893	15432	14275

MONTHLY FACTOR 1.00 TOTAL COUNT 15432  
 DAILY FACTOR Tue 0.93 AADT: 14275  
 Wed 0.92









**OLDENBURG**inc.  
A RENAISSANCE COMPANY

185 Lorne Images

**OLDENBURG**inc.  
A RENAISSANCE COMPANY

185 Lorne Images

[www.OLDENBURGinc.com](http://www.OLDENBURGinc.com)

[www.OLDENBURGinc.com](http://www.OLDENBURGinc.com)